

Box Canyon

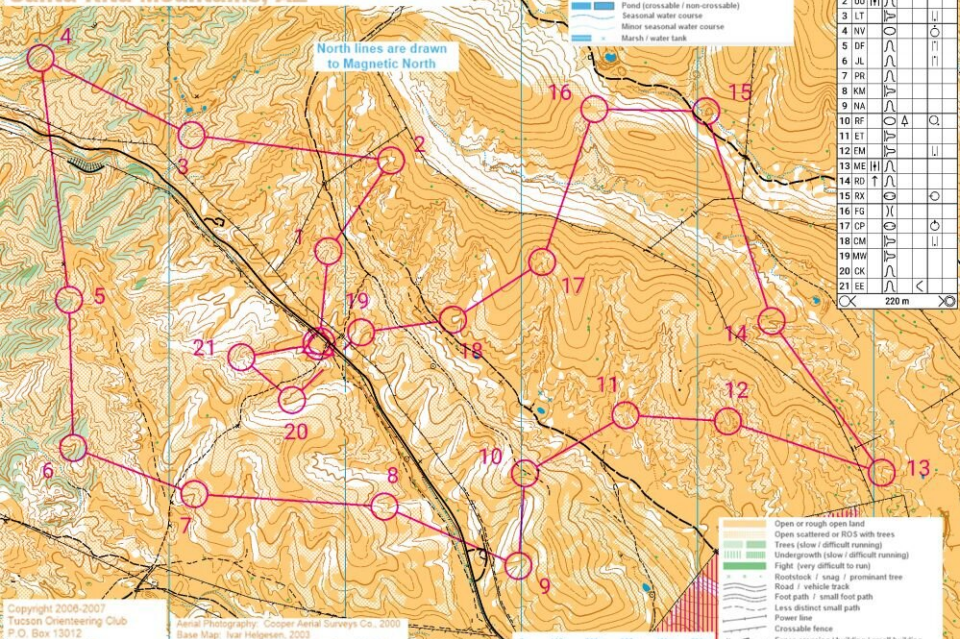
Coronado National Forest
Santa Rita Mountains, AZ

2-Hour
Score-0
2/15/2021

- Contours (5 m / index / form line)
- Earth bank
- Erosion gully / small erosion gully
- Small knoll / elongated knoll / small depression
- Earth pit / rocky pit or mine shaft
- Broken ground
- Impassable cliff / passable rock face
- Boulder / boulder cluster
- Pond (crossable / non-crossable)
- Seasonal water course
- Minor seasonal water course
- Marsh / water tank

Box Canyon 2021-02				
10.14 Km Optimum				
Coker	8.6 km	315 m		
1	PC			
2	UU			
3	LT			
4	NV			
5	DF			
6	JL			
7	PR			
8	KM			
9	NA			
10	RF			
11	ET			
12	EM			
13	ME			
14	RD			
15	RX			
16	FG			
17	CP			
18	CM			
19	MW			
20	CK			
21	EE			

North lines are drawn to Magnetic North



- Open or rough open land
- Open scattered or RDS with trees
- Trees (slow / difficult running)
- Undergrowth (slow / difficult running)
- Fight (very difficult to run)
- Rootstock / snag / prominent tree
- Road / vehicle track
- Foot path / small foot path
- Less distinct small path
- Power line
- Crossable fence
- Fence crossing / building / small building
- Ruin (cairn or monument / man-made feature)

Copyright 2006-2007
Tucson Orienteering Club
P.O. Box 13012
Tucson, AZ 85732
www.tucsonorienteeringclub.org

Aerial Photography: Cooper Aerial Surveys Co., 2000
Base Map: Ivar Helgesen, 2003
Field Checked: Tucson Orienteering Club 2005-16
Cartography: Tucson Orienteering Club 2005-16

SCALE 1:10,000
CONTOUR INTERVAL 5m